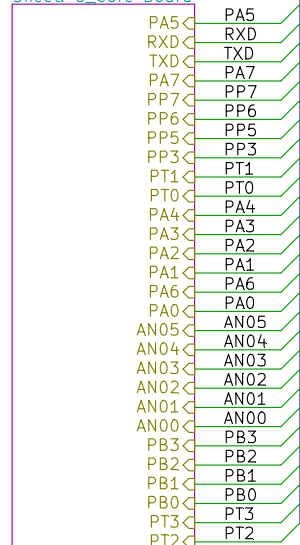


# Sheet: U\_Core Board



File: Core Board.sch

# Sheet: Igniter Outputs



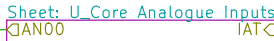
File: U\_Igniter Outputs.sch

# Sheet: U Injectors



File: Injectors.sch

# Sheet: U\_Core Analogue Inputs



File: Core Analogue Inputs.sch

# Sheet: U\_Digital Inputs



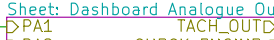
File: Digital Inputs.sch

# Sheet: Dashboard Analogue Outputs



File: U\_Dashboard Analogue Outputs.sch

# Sheet: U\_VR Interfaces



File: VR Interfaces.sch

# Sheet: U\_Low Side Drivers



File: Low Side Drivers.sch

# Sheet: U\_RS232 Comms



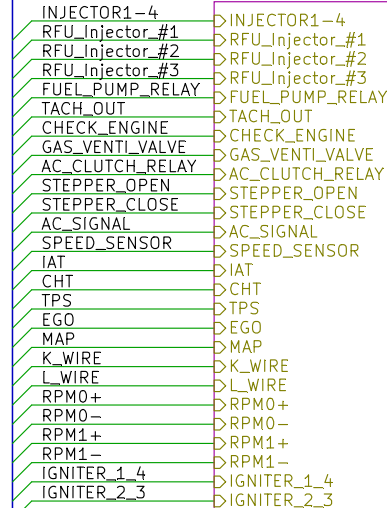
File: RS232 Comms.sch

# Sheet: U\_Power Supplies



File: Power Supplies.sch

# Sheet: Connector



File: U\_Connector.sch

for PSA TU5JP/K engine

diyefl.org

File: catsquirt\_ioboard.sch

Sheet: /

Title: catsquirt I/O board(code migrant worker)

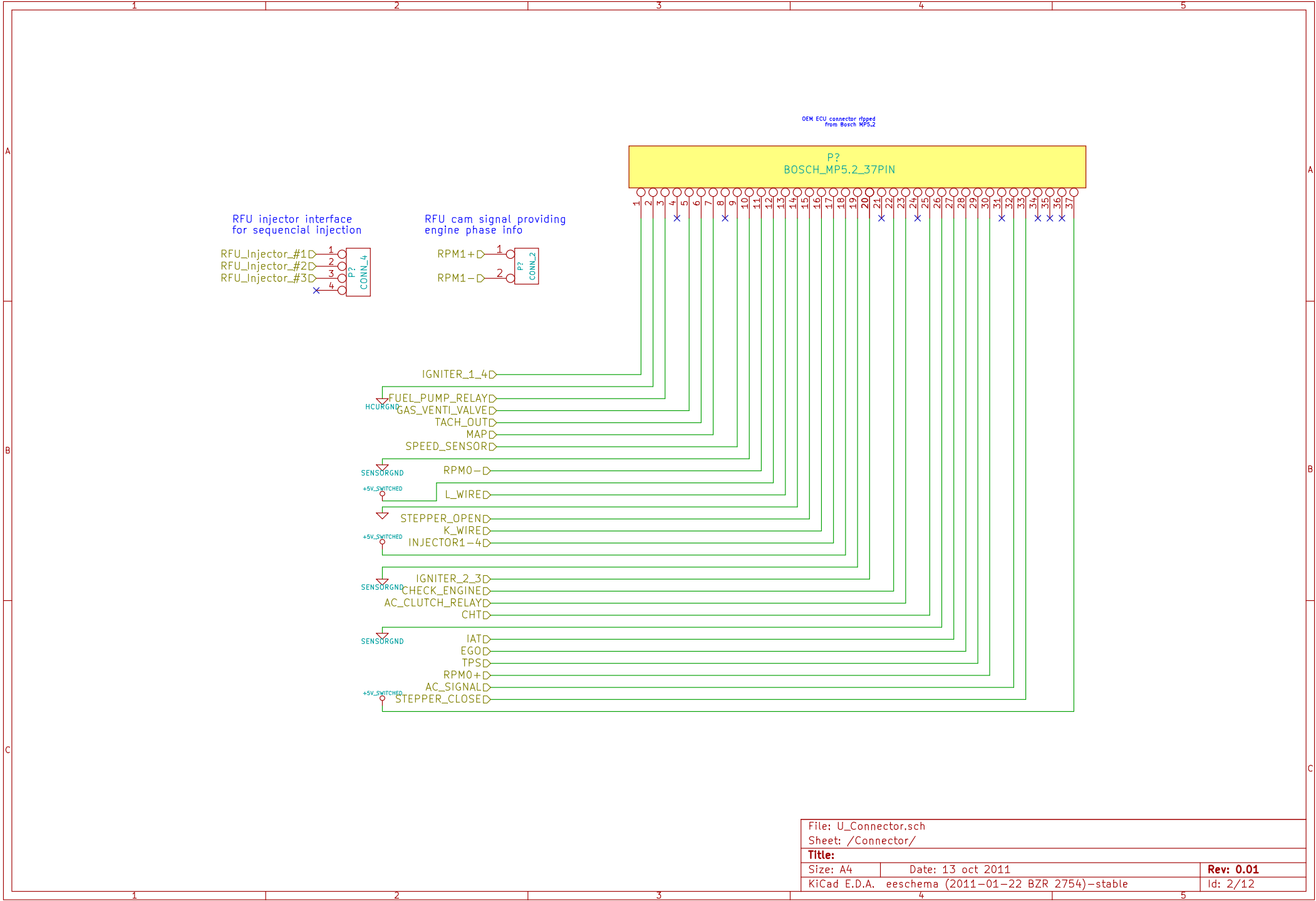
Size: A4

Date: 13 oct 2011

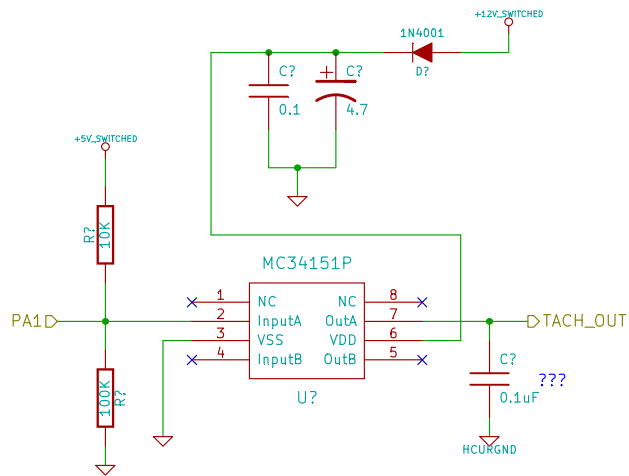
Rev: 0.01

KiCad E.D.A. eeschema (2011-01-22 BZR 2754)-stable

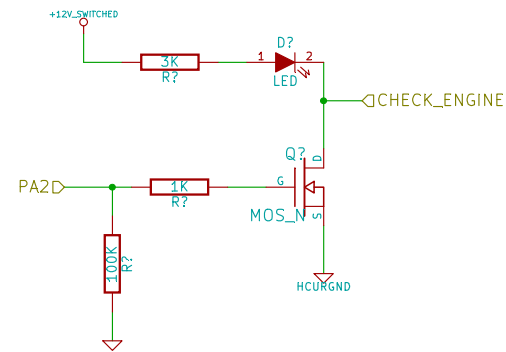
Id: 1/12



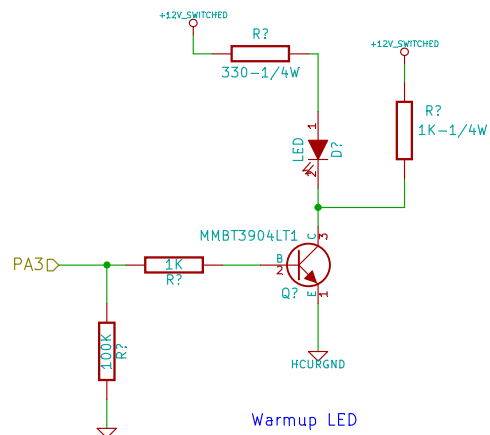
File: U_Connector.sch		
Sheet: /Connector/		
Title:		
Size: A4	Date: 13 oct 2011	Rev: 0.01
KiCad E.D.A. eschema (2011-01-22 BZR 2754)-stable		Id: 2/12



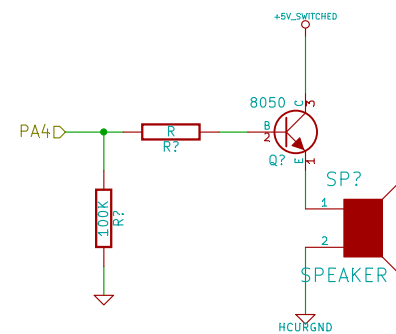
tachometer PWM output



check engine lamp

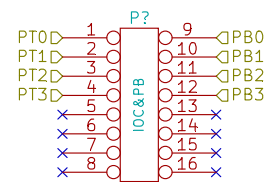
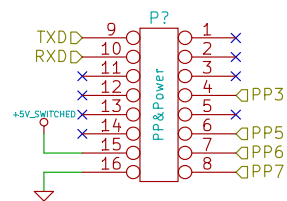
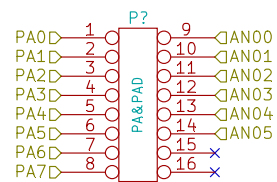


Warmup LED

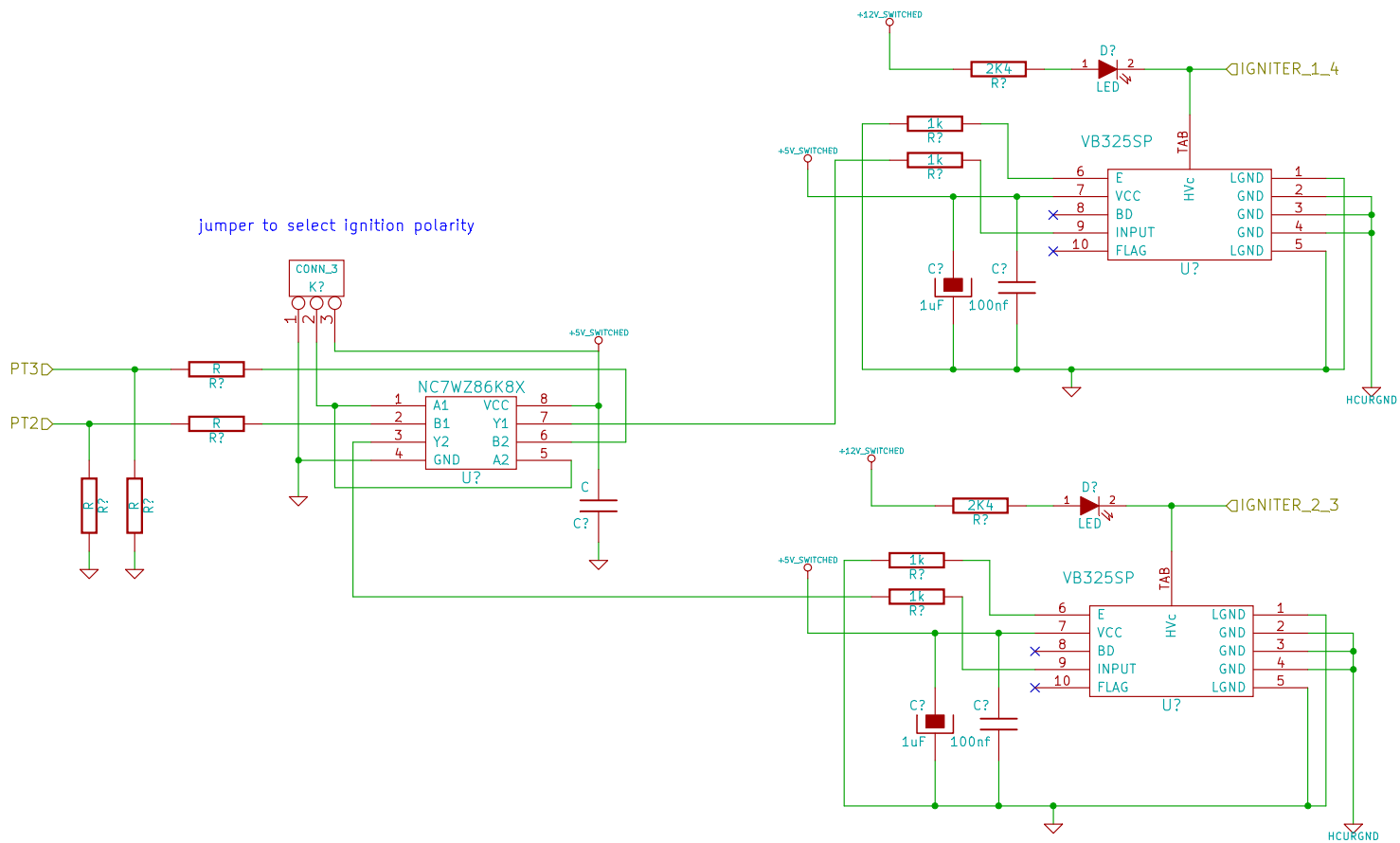


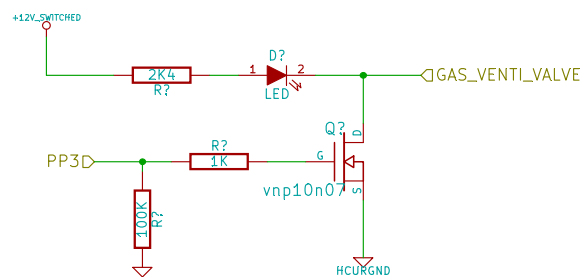
lose sync notify

File: U_Dashboard Analogue Outputs.sch		
Sheet: /Dashboard Analogue Outputs/		
<b>Title:</b>		
Size: A4	Date: 13 oct 2011	Rev:
KiCad E.D.A. eeschema (2011-01-22 BZR 2754)-stable		Id: 3/12

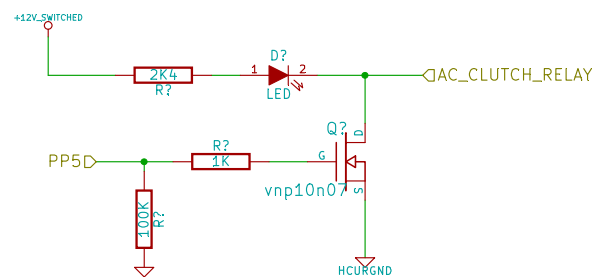


File: Core Board.sch		
Sheet: /U_Core Board/		
<b>Title:</b>		
Size: A4	Date: 13 oct 2011	<b>Rev: 0.01</b>
KiCad E.D.A. eeschema (2011-01-22 BZR 2754)-stable		Id: 4/12

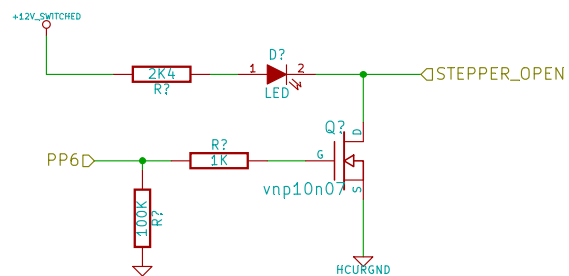




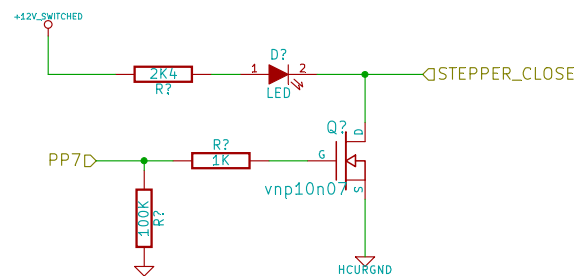
gas tank ventilation valve



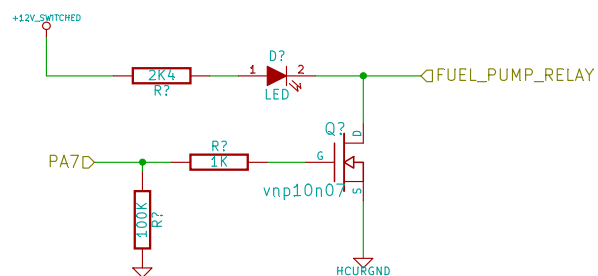
AC compressor clutch relay



idle stepper open

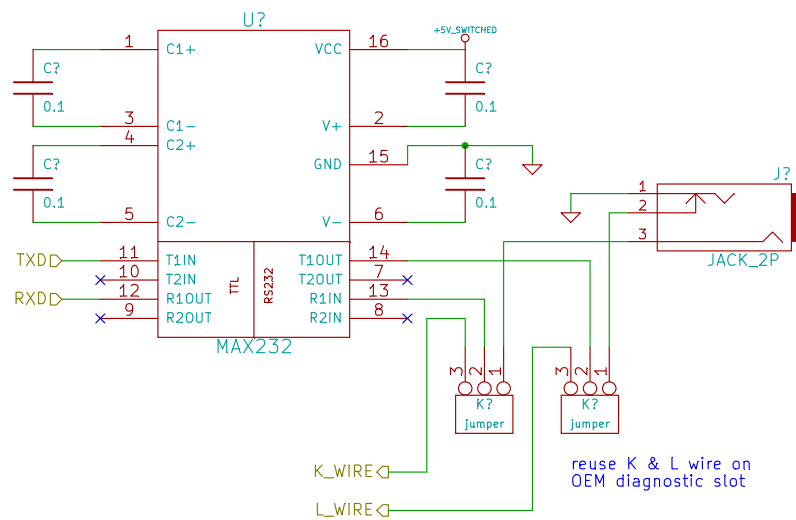


idle stepper close



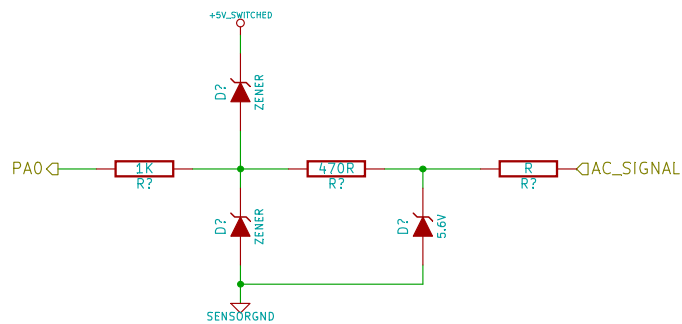
Fuel Pump Relay Driver

File: Low Side Drivers.sch		
Sheet: /U_Low Side Drivers/		
<b>Title:</b>		
Size: A4	Date: 13 oct 2011	<b>Rev:</b>
KiCad E.D.A. eeschema (2011-01-22 BZR 2754)-stable		Id: 6/12

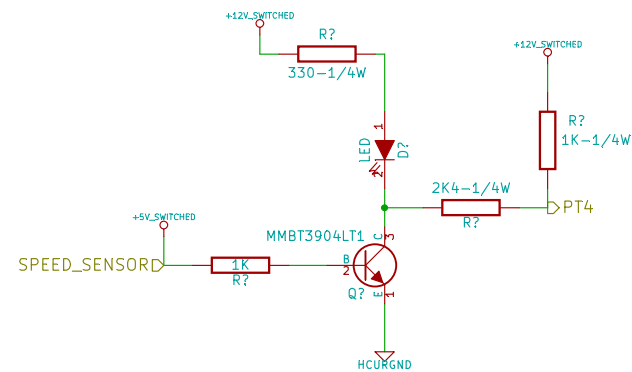


Serial port communication

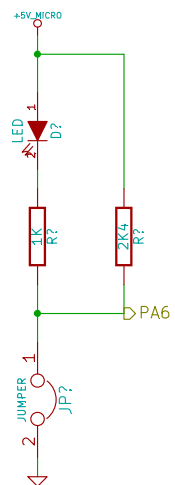
File: RS232 Comms.sch		
Sheet: /U_RS232 Comms/		
<b>Title:</b>		
Size: A4	Date: 13 oct 2011	<b>Rev:</b>
KiCad E.D.A. eeschema (2011-01-22 BZR 2754)-stable		Id: 7/12



AC status input



Vehicle speed sensor input

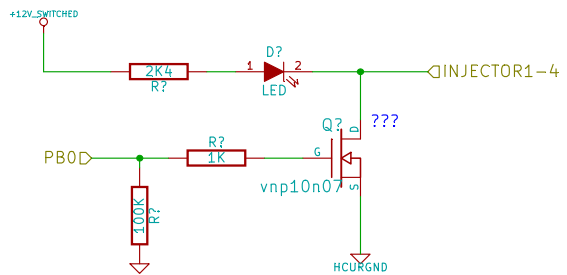


Enable Serial Monitor

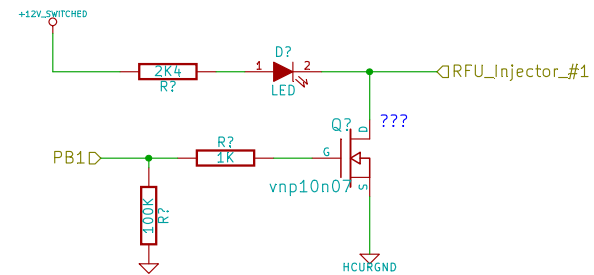
File: Digital Inputs.sch		
Sheet: /U_Digital Inputs/		
<b>Title:</b>		
Size: A4	Date: 13 oct 2011	Rev:
KiCad E.D.A. eeschema (2011-01-22 BZR 2754)-stable		Id: 8/12



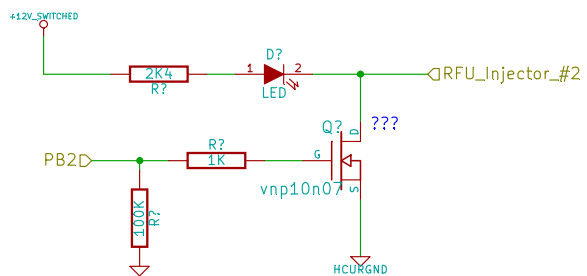




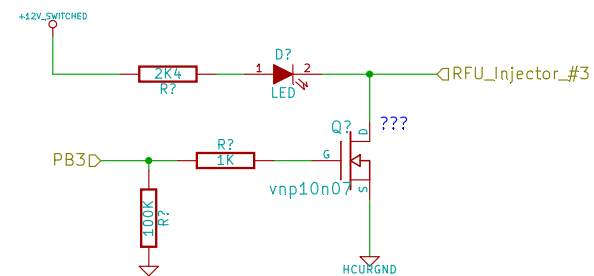
Drive 4 High-Z injectors for batch injection



Candidate injector #1

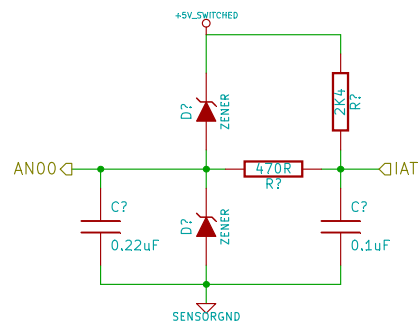


Candidate injector #2

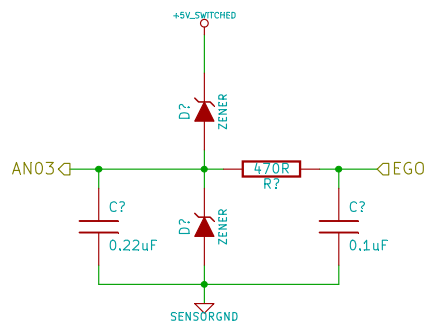


Candidate injector #3

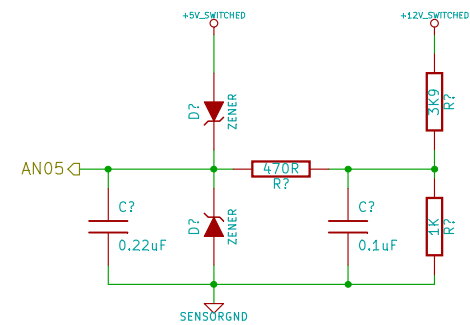
File: Injectors.sch		
Sheet: /U_Injectors/		
<b>Title:</b>		
Size: A4	Date: 13 oct 2011	Rev:
KiCad E.D.A. eschema (2011-01-22 BZR 2754)-stable		Id: 10/12



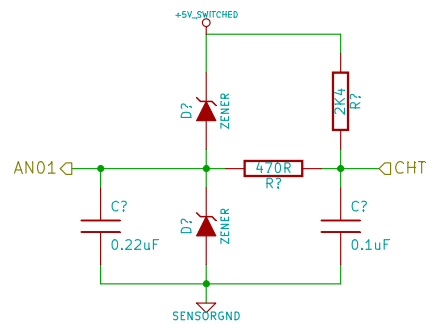
Intake Air Temperature



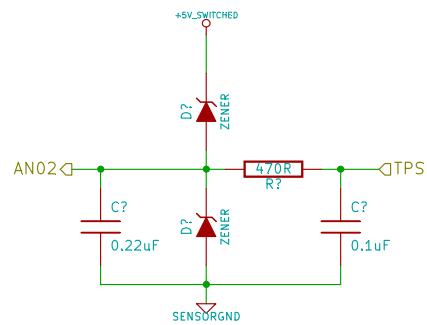
Exhaust Gas Oxygen



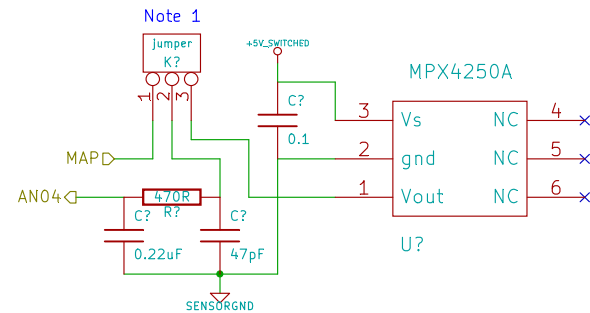
Battery Reference Voltage



Coolant/Head Temperature



Throttle Position Sensor

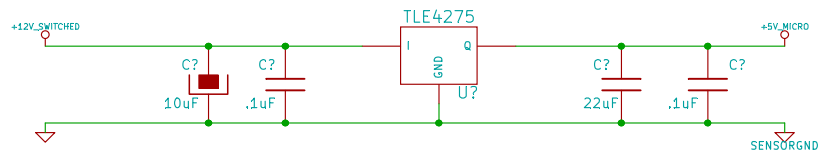


Manifold Absolute Pressure

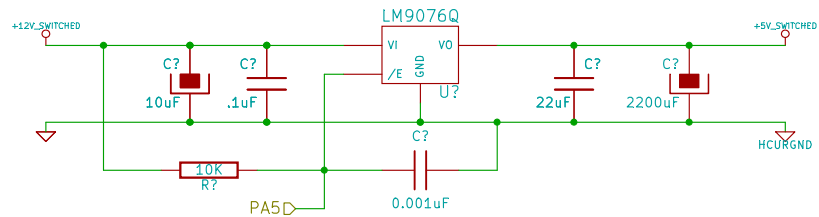
Note 1: Our MAP could be mounted externally through this jumper

File: Core Analogue Inputs.sch		
Sheet: /U_Core Analogue Inputs/		
<b>Title:</b>		
Size: A4	Date: 13 oct 2011	Rev:
KiCad E.D.A. eeschema (2011-01-22 BZR 2754)-stable		Id: 11/12

CPU VOLTAGE REGULATOR



Switched power regulator with shutdown pin



diyefi.org		
File: Power Supplies.sch		
Sheet: /U_Power Supplies/		
Title: Power supplies		
Size: A4	Date: 13 oct 2011	Rev: 0.01
KiCad E.D.A. eeschema (2011-01-22 BZR 2754)-stable		Id: 12/12