

TA XDP512_CPU Board

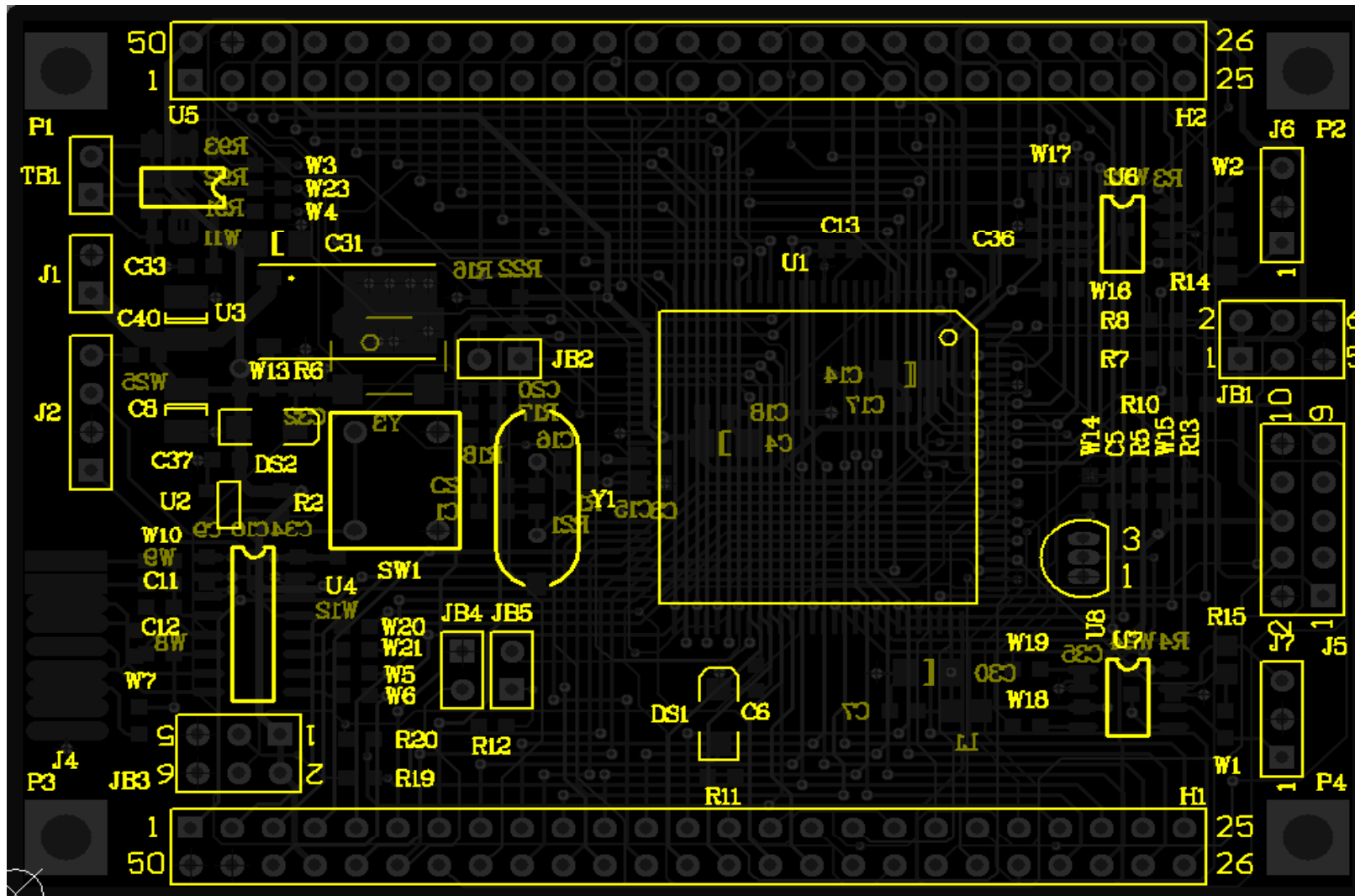
1. **TA's XDP512 CPU board,**
Adapt9S12XDP512

Lekker's_CPU Board

1. Lekker's CPU board

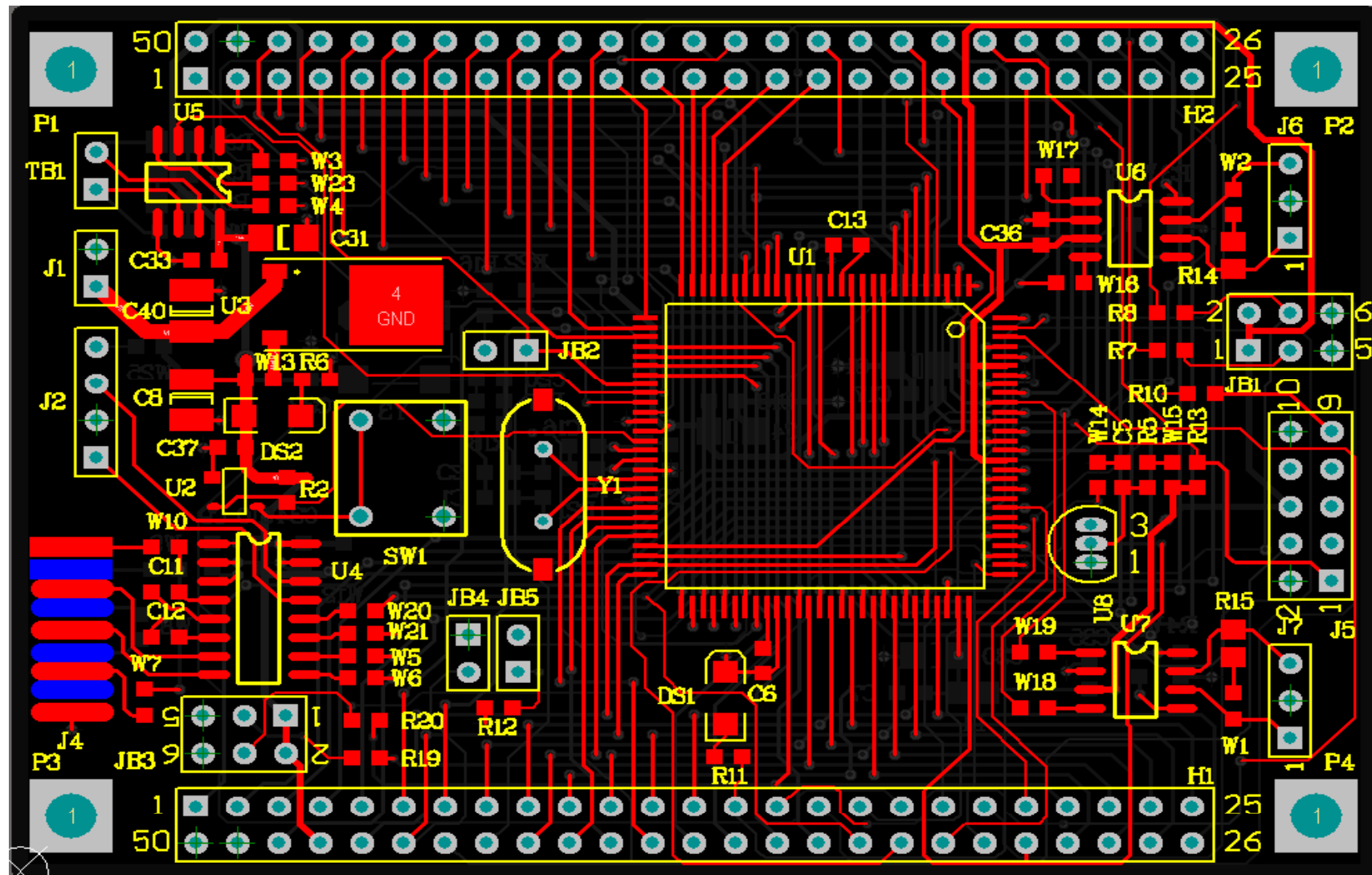
The pin-out assignment for both H1 and H2 Connectors is exactly same as the TA Adapt9S12XDP512 board, same as in the mechanical dimensions.

Lekker's_CPU Board

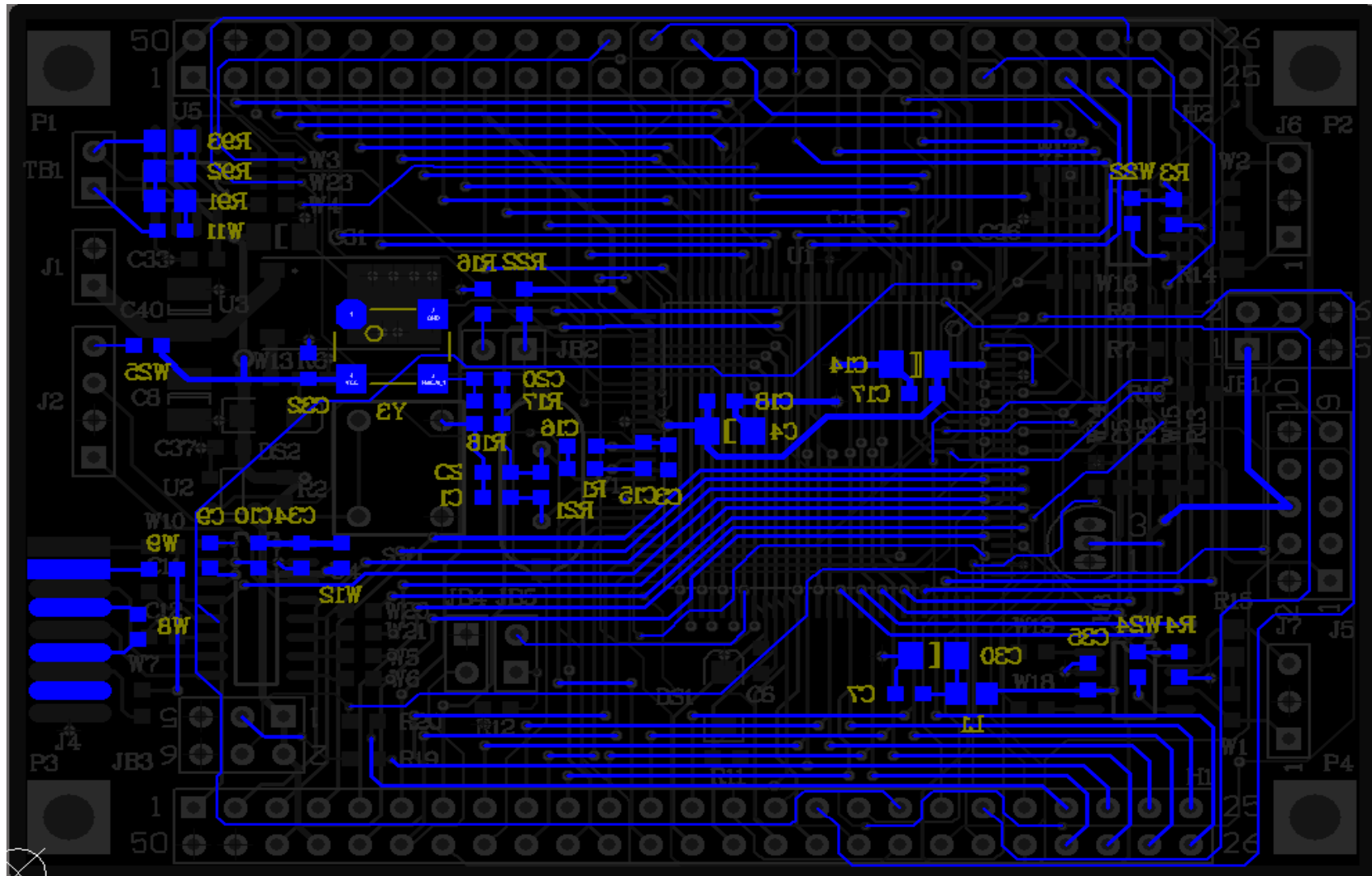


The Lekker from Alabama

Lekker's_CPU Board



Lekker's_CPU Board



The Lekker from Alabama

FreeEMS Main Board

1. Mating H1 and H2 Pin Out are exactly same as the TA's XDP512 board
2. DB37 all I/O Pins' assignment are same as the MS2V.3
3. Function List:
 - Speed Triggers: Dual inputs (VR or Hall)
 - Analog Inputs: MAT, MAP, CLT, TPS, O2, Knock Sensor
 - Output: IAC, Fuel Pump, Tach Out, 8 x Ignitions, 8 x Injectors
 - UART port, CAN port (option on CPU board)
 - Power supply (+12V to +12V pass through, LDO +5V @1.5A , LDO +3.3V@0.5A)